



BODMIN
COLLEGE
SIXTH
FORM

Course Overview

Health and Social Care

Level 2 T Level Foundation Programme in Health

Do you want to make a real difference to people's lives? If you care about health, happiness and wellbeing, a career in Health and Social Care could be for you.

This foundation programme gives you the skills, knowledge and confidence to progress to a T Level in Health or into an apprenticeship. You'll study key topics such as biology, anatomy and physiology, alongside social care and essential employability skills.

The course helps you develop vital qualities such as empathy, dignity, professionalism and time management, while introducing you to real-world practices used in hospitals, care homes and children's centres. Learning takes place through classroom study, clinical practice, and work placement experience.

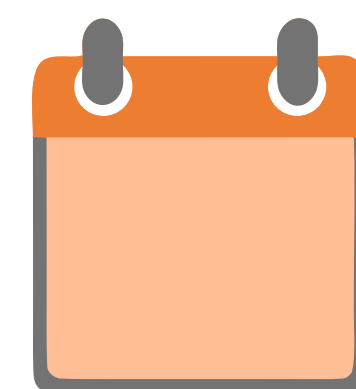
Assessment

- Both internal assignments and external assessment, plus work-based assessments.



Course Structure

- One year, full time. Initially full-time at Bodmin College, building to a mix of time at Bodmin College and time on a work placement.



Entry Requirements

- GCSEs at grade 4 or above in English and Maths, or be committed to achieving these while in Sixth Form.



Progression and Future Opportunities

- By the end of the course, you'll be ready to progress to the T Level in Health or move into an apprenticeship, paving the way for a career in health and social care.

