



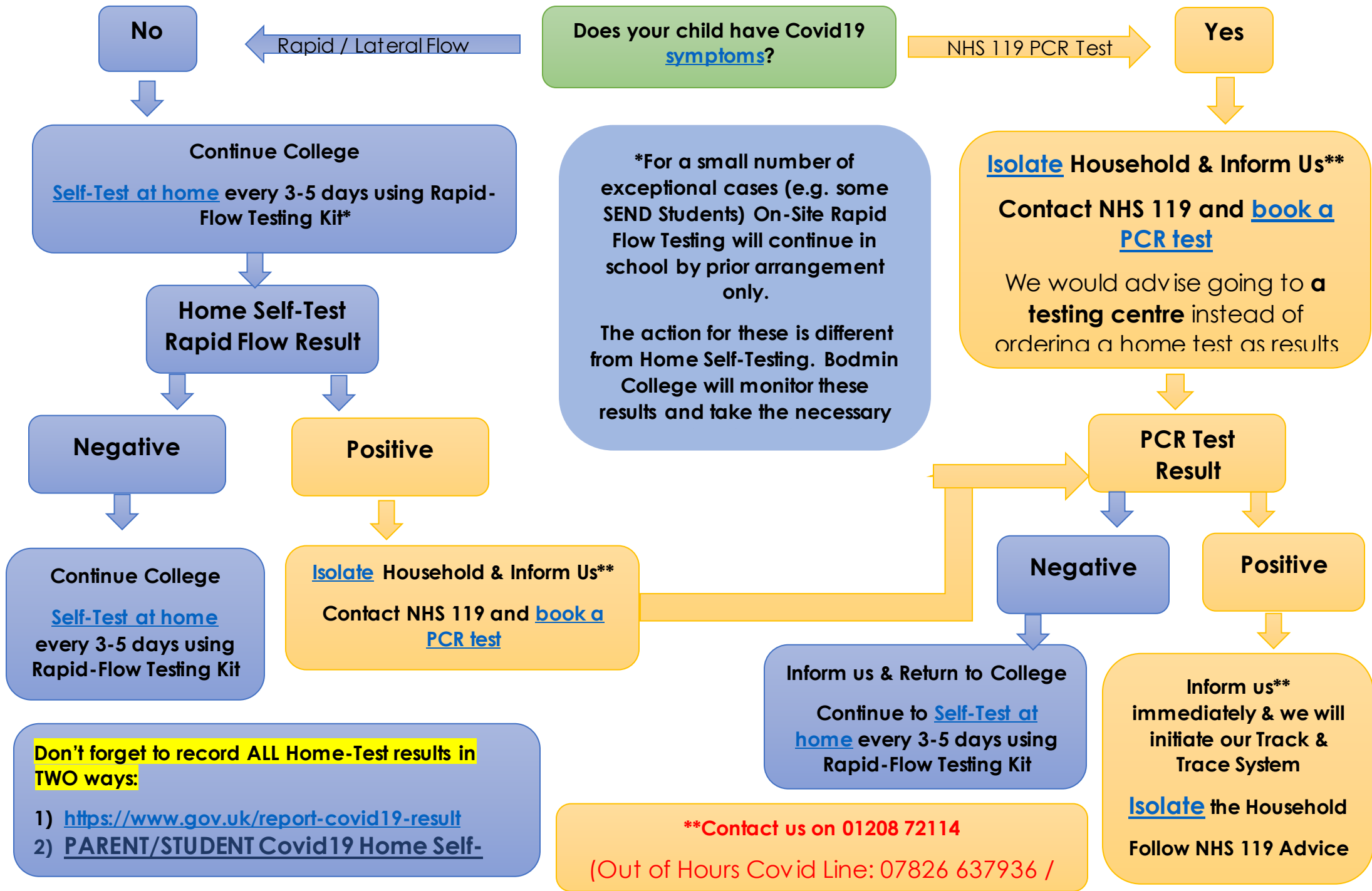
COVID19 Guidance For Parents & Carers – Spring 2021

PROCEDURES FOR POSSIBLE, SUSPECTED AND CONFIRMED CASES – PRODUCED IN
CONJUNCTION WITH PUBLIC HEALTH CORNWALL

Contents:

1. Easy Reference Flow Chart – What to do if.....
2. Detailed information to accompany the flow chart
3. What will Bodmin College do if notified of a positive case?

Bodmin College Covid19 Advice for Parents/Carers – In Conjunction with Public Health Cornwall & Public Health England



Don't forget to record ALL Home-Test results in TWO ways:

- 1) <https://www.gov.uk/report-covid19-result>
- 2) PARENT/STUDENT Covid19 Home Self-

****Contact us on 01208 72114**
(Out of Hours Covid Line: 07826 637936 /

The following section gives you more detailed information to accompany the above quick reference flow chart.

Symptoms

The most common symptoms of coronavirus (COVID-19) are recent onset of:

- a new continuous cough
- a high temperature
- a loss of, or change in, your normal sense of taste or smell (anosmia)

For most people, coronavirus (COVID-19) will be a mild illness.

Different Types of Test

Approved Test Centre Lateral Flow Test (ATC-LFD) – These are the type taken in school. If a positive LFD is received you must isolate in the same way as for a PCR test.

Home Self-Test Rapid Lateral Flow Kit – These are the type that you do yourself at home. If you get a positive result, you must isolate and inform us immediately. You must also arrange a PCR test through 119 or online <https://www.nhs.uk/ask-for-a-coronavirus-test>

PCR Test – These are the type carried out at recognised NHS testing sites. These can confirm whether or not you have COVID19. You can arrange a PCR test through NHS119

Category and Contents:

1. What to do if your child or a member of your household develops symptoms of COVID19 or self-tests positive at home.
2. What to do if your child receives a positive PCR at a testing centre or a positive ATC-LFD test result in school.
3. What to do if your child is identified as a close contact or a household member tests positive
4. General information

1) What to do if your child or a member of your household develops symptoms of COVID 19 or tests positive on a self-test home kit

If your child or a household member develops symptoms of COVID-19, you must:

- **Isolate at home** for at least **10 days** from the date when their symptoms appeared.
- **Inform the attendance office** on **01208 72114 option 2 (for 6th form option 3)**
- Arrange to be **PCR tested** via <https://www.nhs.uk/ask-for-a-coronavirus-test> or by calling 119.
- If fit and well, your child should access their **learning remotely** through Satchel One.
- **If the PCR test result is negative** please inform attendance and your child can return to college

- **If the PCR test result is positive** please inform attendance immediately – **see section 2**

All other household members who remain well, must also stay at home and not leave the house for 10 days. This includes anyone in your 'Support Bubble'.

Further information is available at: <https://www.gov.uk/government/publications/covid-19-stay-at-home-guidance/stay-at-home-guidance-for-households-with-possible-coronavirus-covid-19-infection>

The 10-day period starts from the day when the first person in the house became ill.

Household members should not go to work, school or public areas and exercise should be taken within the home.

If you require help with buying groceries, other shopping or picking up medication, or walking a dog, you should ask friends or family. Alternatively, you can order your shopping online and medication by phone or online.

Household members staying at home for 10 days will greatly reduce the overall amount of infection the household could pass on to others in the community

If you are able, move any vulnerable individuals (such as the elderly and those with underlying health conditions) out of your home, to stay with friends or family for the duration of the home isolation period.

For anyone with symptoms, you can seek advice from the nhs.uk website at <https://www.nhs.uk/conditions/coronavirus-covid-19/check-if-you-have-coronavirus-symptoms/>. If you are concerned about your child's symptoms, or they are worsening you can seek advice from NHS 111 at <https://111.nhs.uk/> or by phoning 111.

2) What to do if your child receives a confirmed positive PCR at a testing centre or a positive ATC-LFD test at school for COVID 19

If your child is at home and receives a positive PCR test result, you must **inform us immediately**. Please contact the attendance office on **01208 72114 option 2 (for 6th form option 3)** OR if **outside of school hours**, call 07826 637936

If your child tests positive at school (ATC-LFD test) we will contact you immediately. If your child is in school at this time, they will be isolated and you will need to arrange for them to be collected.

You will be asked to help us in the track and trace process and will be asked to give the names of anyone who has been in close contact in the 48 hours prior to symptoms starting.

A close contact is:

- Anyone who has been within 1m for any length of time
- Anyone who has been within 2m for 15 minutes or more

The confirmed positive case **must isolate for 10 days** or as advised by the NHS. If fit and well, your child should access their **learning remotely** through Satchel One.

They may return to school at the end of the 10 days providing they no longer have a high temperature or fever.

All other members of the household must also isolate for 10 days. If they develop symptoms they should also arrange a test. Further information is available at:

<https://www.gov.uk/government/publications/covid-19-stay-at-home-guidance/stay-at-home-guidance-for-households-with-possible-coronavirus-covid-19-infection>

3) What to do if your child has been identified as a close contact or a household member tests positive via PCR or ATC-LFD (6th Form students this includes NHS App notification)

Cases are considered infectious 48 hours prior to symptoms starting so a close contact is anyone who has been:

- within 1m for any length of time in the 48 hours prior to symptoms
- within 2m for 15 minutes or more in the 48 hours prior to symptoms

If your child is identified as a close contact to someone who has received a confirmed positive PCR or **ATC-LFD** test for COVID19 they **must stay at home and self-isolate for 10 days** and should access their **learning remotely** through Satchel One.

Inform the attendance office on 01208 72114 option 2 (for 6th form option 3)

If your child is well at the end of the 10 days period of self-isolation, then they can return to usual activities.

If your child or any members of your household **develops symptoms** you must arrange to be **PCR tested** via <https://www.nhs.uk/ask-for-a-coronavirus-test> or by calling 119 and again please **inform the attendance office on 01208 72114 option 2 (for 6th form option 3)**

Other members of your household can continue normal activities provided your child does not develop symptoms within the 10 day self-isolation period.

For further information:

<https://www.gov.uk/government/publications/guidance-for-contacts-of-people-with-possible-or-confirmed-coronavirus-covid-19-infection-who-do-not-live-with-the-person>

4) General Information:

How to stop COVID-19 spreading

There are things you can do to help reduce the risk of you and anyone you live with getting ill with COVID-19

Do

- wash your hands with soap and water often – do this for at least 20 seconds
- use hand sanitiser gel if soap and water are not available
- wash your hands as soon as you get home
- cover your mouth and nose with a tissue or your sleeve (not your hands) when you cough or sneeze
- put used tissues in the bin immediately and wash your hands afterwards

Further Information

Further information is available at <https://www.nhs.uk/conditions/coronavirus-covid-19/>

What will Bodmin College do if notified of a positive case during term time?

It is important that we are notified straight away and that you contact us in the first instance. We ask that you do not contact classmates and friends unless we advise you to do so. This includes not posting details on social media.

When notified of a case we will:

1. Ask a series of questions to establish full details of the timescales including when symptoms began and/or when a test was taken including the type of test and the result.
2. Carry out rigorous track & trace procedures to identify all possible close contacts. These are tried and tested and in accordance with Public Health guidance. As part of this process we will ask you a series of questions

that cover your actions over the last 48 hours from the start of symptoms and/or positive test (see green box below).

3. Liaise with Public Health England and Public Health Cornwall to ensure that any case(s) are contained quickly and that the advice issued to parents/carers, students and staff is up to date and correct.
4. Communicate openly with parents/carers, students and staff whilst protecting the identity of the person(s) affected for their own well-being and data protection.

What will Bodmin College do if notified of a positive case during the holidays?

If notified of a case or test that occurred within 48 hours of the last day of term, we will follow the same procedures as outlined above.

After 48 hours from contact in school, parents should contact NHS Track & Trace instead and follow the advice and guidance from the NHS.

Required Information in Cases of Confirmed Positive Test – Track & Trace

In the event of a confirmed positive PCR OR LFD test result, you will be asked to provide the following information:

- **Date symptoms began** – (*cases are considered infectious 48 hours prior to symptoms starting*)
- Names of all **close contacts** within the 48hrs prior to them developing symptoms and isolating:-
 - face to face contact (within 1m) for any length of time – including talking to them or coughing, etc.
 - within 2m for more than 15 minutes (in total over 1 day) – including travelling in the same vehicle (including planes and buses)
- We will use additional information that includes: class lists, seating plans, meetings, transport lists, break/lunch/after-school registers and will ask you for information on any other situations where close contact may have occurred.

If you are unsure about the advice and guidance being given please ask.